

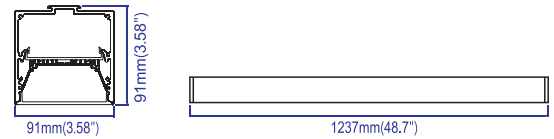
Features

- Aluminum 6063, good heat radiation with long lifespan;
- Waterproof Ip66;
- Anti-collision level Ik10;
- Support 0~10V, PWM and Resistor dimming solution;
- High lighting efficiency, save energy;
- Long lifespan, ≥ 50000 hours;
- Light source adopts LM-80 certified LED;
- Adopt UL Class P certified power supply;

Parameter

Size	1237mm(4.06ft)X91mm(0.3ft)X91mm(0.3ft)
Beam angle	106°(PDM)
Working voltage	120~277VAC /50~60Hz
PF	≥ 0.9
Input power	45W (11.3W/ft)
CCT	3000K/4000K/6000K (3500K 、 5000K)
CRI	80+/90+
Lumen	4857~5150lm(1214~1288lm/ft)
Energy efficiency	A+
Dimming range	1~100%
Operating temperature	-30°C~+45°C
Storage temperature	-40°C~+60°C
IP grade	Ip66
Installation way	Surface installation
Package size	1280mm(4.20ft)X145mm(0.48ft)X135mm(0.44ft)
Gross Weight	5.53Kg

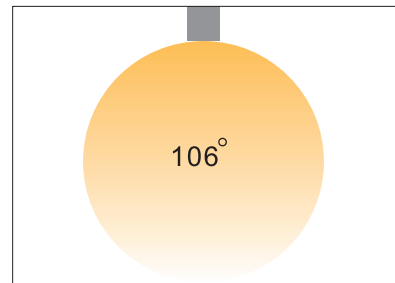
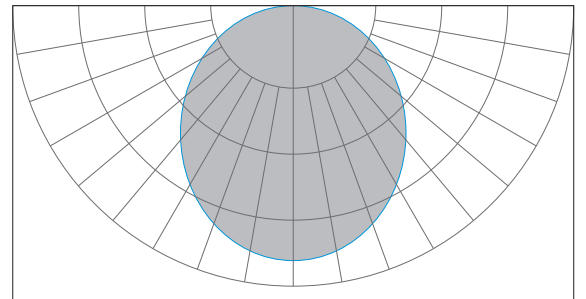
Size



Standard color



Beam angle

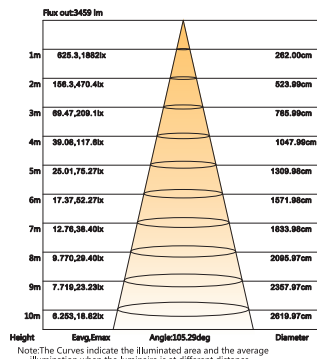
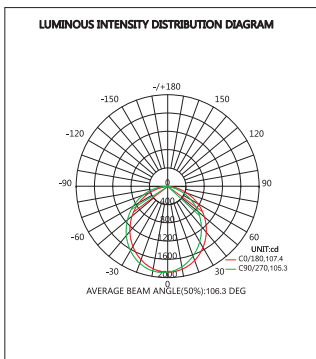


PDM

Remark:

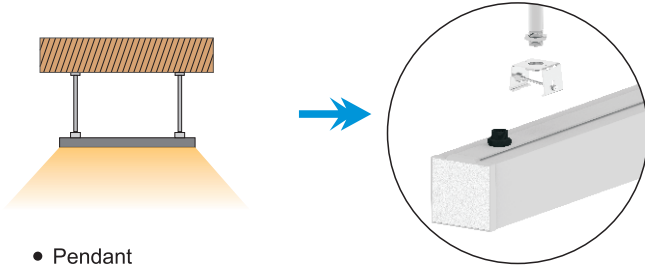
- Output data is from test result of 4ft PDM linear light fixture;
- Tolerance $\pm 10\%$;

Test report

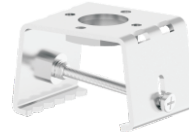


Optional accessories

Installation accessories



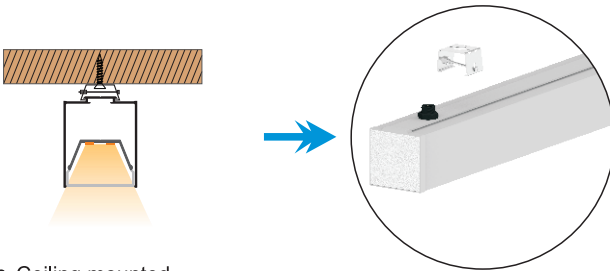
• Pendant



L8989-PT



Ac in line



• Ceiling mounted



L8989-SM



Ac in line

L8989-PT: Pendant set

L8989-SM :Surface mounting accessories

Ac in line: AC input cable

Connection solution



• Connection



L8989-180

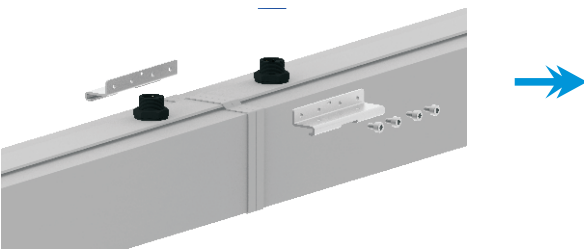


L8989-CH

L8989-180: straight connector

L8989-CH: electric connection cable

Disassembly tool



• Tool



L-IT-4

L-IT-4: hexagonal screw driver